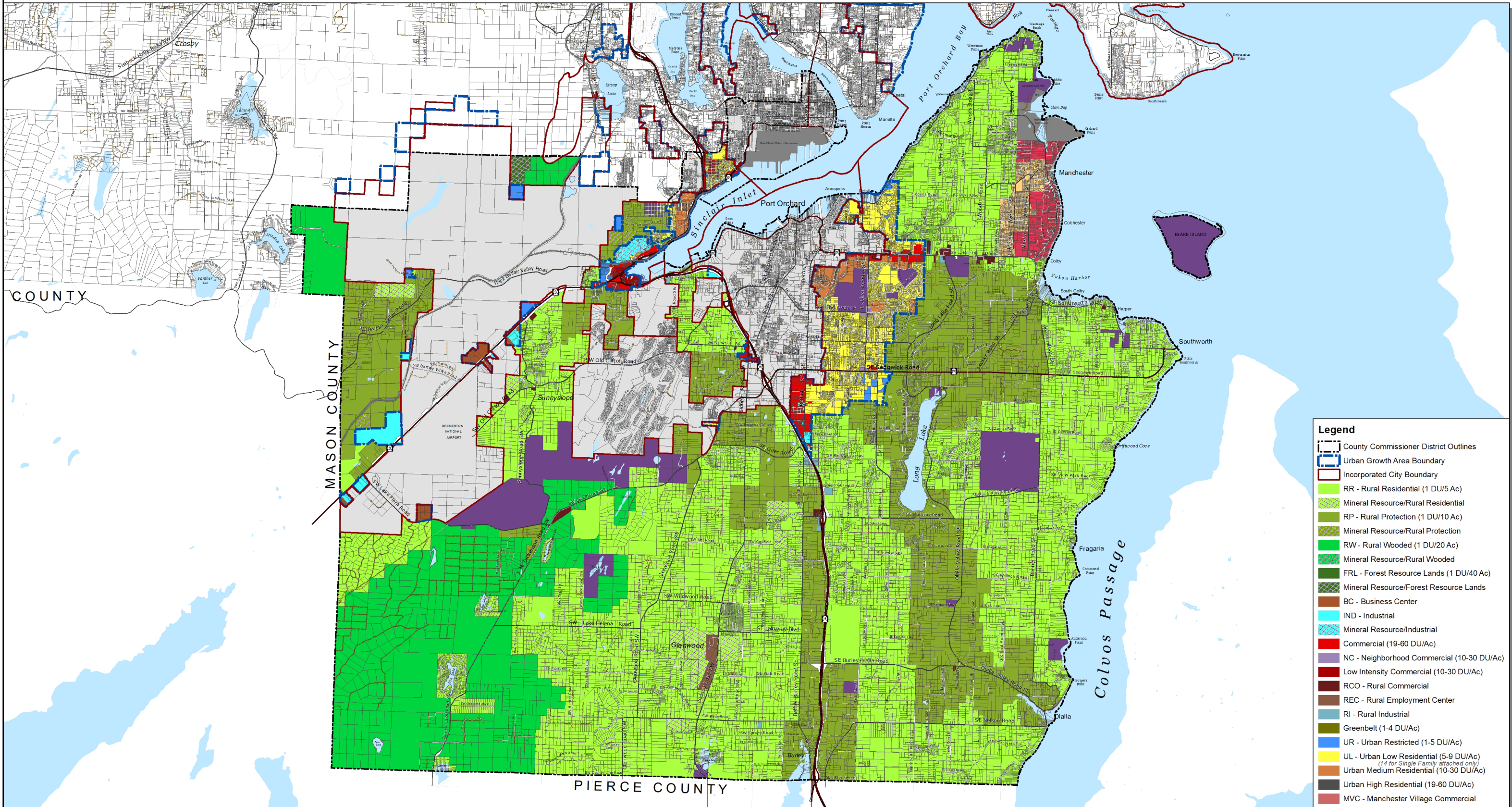


# Commissioner District 2 - South Kitsap Zoning



**Legend**

- County Commissioner District Outlines
- Urban Growth Area Boundary
- Incorporated City Boundary
- RR - Rural Residential (1 DU/5 Ac)
- Mineral Resource/Rural Residential
- RP - Rural Protection (1 DU/10 Ac)
- Mineral Resource/Rural Protection
- RW - Rural Wooded (1 DU/20 Ac)
- Mineral Resource/Rural Wooded
- FRL - Forest Resource Lands (1 DU/40 Ac)
- Mineral Resource/Forest Resource Lands
- BC - Business Center
- IND - Industrial
- Mineral Resource/Industrial
- Commercial (19-60 DU/Ac)
- NC - Neighborhood Commercial (10-30 DU/Ac)
- Low Intensity Commercial (10-30 DU/Ac)
- RCO - Rural Commercial
- REC - Rural Employment Center
- RI - Rural Industrial
- Greenbelt (1-4 DU/Ac)
- UR - Urban Restricted (1-5 DU/Ac)
- UL - Urban Low Residential (5-9 DU/Ac)  
*(14 for Single Family attached only)*
- Urban Medium Residential (10-30 DU/Ac)
- Urban High Residential (19-60 DU/Ac)
- MVC - Manchester Village Commercial
- MVLR - Manchester Village Low Residential
- MVR - Manchester Village Residential
- Park
- CITY - Incorporated City
- MIL - Military
- Lake
- Salt Water

This map was created from existing map sources, not from field surveys. Determination of fitness for use lies with the user, as does the responsibility for understanding the accuracy and limitations of this map and data.

The information on this map may have been collected from various sources and can change over time without notice.

While great care was taken in making this map, there is no guarantee or warranty of its accuracy as to labeling, placement or location of any geographic features present. This map is intended for informational purposes only and is not a substitute for a field survey.

Kitsap County and its officials and employees assume no responsibility or legal liability for the accuracy, completeness, reliability, or timeliness of any information on this map.

Map Published Date: April, 2024



## Preferred Alternative - Board of Commissioner Direction

Kitsap County Department of Community Development  
 614 Division Street, MS-36, Port Orchard, Washington 98366  
 VOICE (360) 337-5777 (Kitsap One) \* <https://www.kitsapgov.com/>

